

To remotely access your computer from outside the office.

1. Go to www.logmein.com and login.



2. You will see your computer, click it.



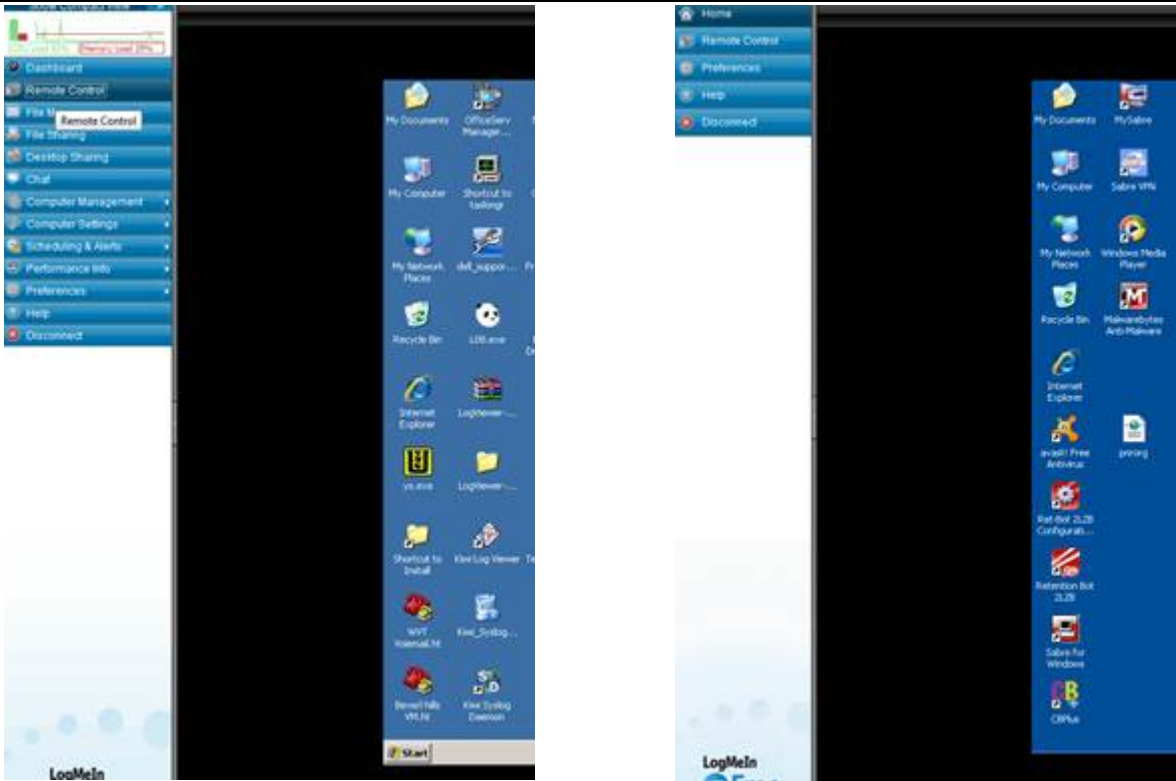
3. Enter the user name and password you use to login to your computer at the office. Unless you were given an access code.

Computer login

Access Code (**will be provided to you**)



4. You will remotely logged into your computer. It will look like 1 of the images below.



5. To maximize the screen, click the maximize button.



6. To minimize, click blue bar at top of screen, click minimize button.



7. To disconnect, click the button.

7. To disconnect, click the button.

